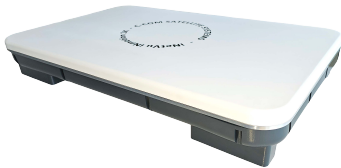


ESA Antenna



Main Features/Capabilities

- Supports GEO, LEO, MEO Constellations
- Ka-band Frequency: Transmit: 27.5-30.0 GHz
Receive: 17.7-20.2 GHz
- Electronic Beam Steering and Tracking
- Elevation Angles: 20-90 deg; (70deg from Boresight) with scan loss up to 5dB
- Azimuth Angles: 360 deg Continuous
- Polarization: Software switchable, Linear (H/V) or CP (RH/LH)



iNetVu® iNmotion 1K

Aperture Size:	TX: 1024 elements (32x32) RX: 1024 elements (32x32)
Gain:	~33 dBi
G/T:	~8 dB/deg.K @ 20GHz (Boresight)
EIRP:	~41 dBW @ 30 GHz (Linear Power @ Boresight)
Radiation Pattern HPBW:	~3.0deg
Power Consumption:	~255W @ P1 dB (153W for TX and 102W for RX)
Physical Size: (LXWXH):	70cm x 45cm x 11cm
Weight:	25Kg
Operating Temp:	-40C to +55C
Storage Temp:	-55c to +70C



iNetVu® iNmotion 4K

Aperture Size:	TX: 4096 elements (64x64) RX: 4096 elements (64x64)
Gain:	~39 dBi
G/T:	~14 dB/deg.K @ 20GHz (Boresight)
EIRP:	~53 dBW @ 30 GHz (Linear Power @ Boresight)
Radiation Pattern HPBW:	~1.7deg
Power Consumption:	~1000W @ P1 dB (600W for TX and 400W for RX)
Physical Size: (LXWXH):	137cm x 87cm x 12.6cm
Weight:	40Kg
Operating Temp:	-40C to +55C
Storage Temp:	-55c to +70C

